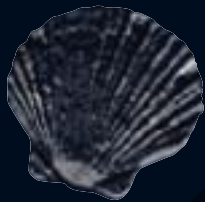
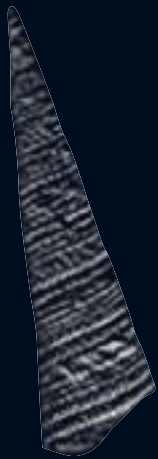


July 2004
(Replaces June 2002)

*This edition of the New Zealand Steel
Overpainting Guide supersedes all previous editions*

OVERPAINTING

NEW AND WEATHERED STEEL ROOFING



ROOFING & PROFILLES (NZ) LTD



NEW



NEW



NEW

P R O D U C T C O M M E N T S

With the developments in paint technology over recent years GALVSTEEL™ roofs can now be painted immediately after installation. To achieve optimum results it is recommended that the painting be carried out within one to two months of installation using a corrosion resistant galvanised iron (solvent borne) primer.

ZINCALUME® can be painted immediately after installation. Rolling oils are not normally used with ZINCALUME®, however, a good clean is still recommended prior to painting. Solvent based primers are not normally used with ZINCALUME®. Use acrylic galvanised iron primers.

In the unlikely event of needing to overpaint new COLORSTEEL® painted steel, we would recommend the surface be allowed to weather for at least a year.

P R E P A R A T I O N

- GALVSTEEL™ roofs should be washed down with warm soapy water to remove any traces of rolling oils.
- Thoroughly clean the surface with fresh flowing water and a medium stiff nylon bristle broom or waterblast (2000-5000psi). Take care not to drive water under laps or flashings.
- Allow roof to dry.

- ZINCALUME® coated steel roofs should be washed down with warm soapy water to remove any traces of rolling oils.
- Thoroughly clean the surface with fresh flowing water and a medium stiff nylon bristle broom or waterblast (2000-5000psi). Take care not to drive water under laps or flashings.
- Allow roof to dry.

- A wipe with a commercially available grease and wax remover is recommended for COLORSTEEL® to remove any strippable film adhesive or wax from the surface.
- COLORSTEEL® products should have their surfaces 'bruised' with a scourer pad, fine grit sand paper, stiff nylon bristle broom or similar, to improve the adhesion. Take care not to sand through the existing paint surface on tension bends.
- Thoroughly clean the surface with fresh flowing water and a medium stiff nylon bristle broom or waterblast (2000-5000psi). Take care not to drive water under laps or flashings.
- Allow roof to dry.

P A I N T

For GALVSTEEL™ apply a good quality acrylic galvanised iron primer.

- Apply two coats of acrylic roofing paint in the selected colour. (Typically two brush applied coats achieve 50 microns).
- Follow the directions on the container, aiming for a paint thickness of 50 microns

For ZINCALUME® coated steel apply a good quality acrylic galvanised iron primer.

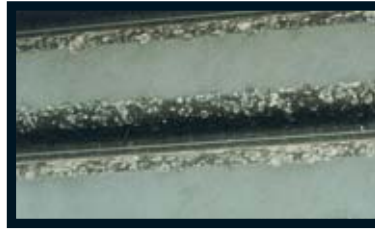
- Apply two coats of acrylic roofing paint in the selected colour. (Typically two brush applied coats achieve 50 microns).
- Follow the directions on the container, aiming for a paint thickness of 50 microns

For COLORSTEEL® products a primer is not required as the primer applied with the COLORSTEEL® system will still be present.

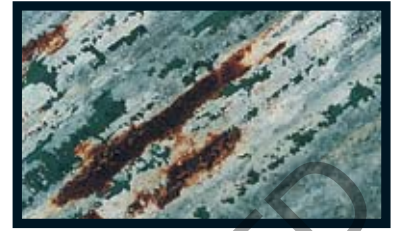
- Apply two coats of acrylic roofing paint in the selected colour. (Typically two brush applied coats achieve 50 microns).
- Follow the directions on the container, aiming for a paint thickness of 50 microns



**WEATHERED
NO CORROSION**



**WHITE CORROSION
(Applies to all products)**



RED CORROSION

PRODUCT COMMENTS

COLORSTEEL® products can be readily overpainted to extend the life of the roof. If overpainting is carried out while the top coat is still in sound condition there is no need to use a primer. High quality acrylic roof paints are recommended.

N/A

Indicates the product has reached the end of its service life and should be replaced.

PREPARATION

- Using a medium nylon bristle broom and fresh flowing water, or water blaster (2000-5000psi), clean the profile of dirt, lichen or mould.
- Take care not to drive water under laps or flashings.
- Check for fall out around chimney flues. Where present, remove with a grease and wax remover, following directions on the container.
- Rinse channels well or dirt will remain, dry and impair subsequent paint adhesion.
- Pay particular attention to the drip edge where the final 15mm is prone to heavy dirt build-up.
- Allow roof to dry.

- Check that the white corrosion is easily removed and no red rusting has developed.
- Using a medium nylon bristle broom and fresh flowing water, or water blaster (2000-5000psi), clean the profile of dirt, lichen or mould.
- Take care not to drive water under laps or flashings.
- Check for fall out around chimney flues. Where present, remove with a grease and wax remover, following directions on the container.
- Rinse channels well or dirt will remain, dry and impair subsequent paint adhesion.
- Pay particular attention to the drip edge where the final 15mm is prone to heavy dirt build-up.
- Allow roof to dry.
- Neutralise areas where white corrosion is present with a commercially available metal cleaner designed for this purpose.

N/A

PAINT

For COLORSTEEL® products a primer is not required as the primer applied with the COLORSTEEL® system will still be present.

- Apply two coats of acrylic roofing paint in the selected colour. (Typically two brush applied coats achieve 50 microns).
- Follow the directions on the container, aiming for a paint thickness of 50 microns

For GALVSTEEL™, ZINCALUME® coated steel and COLORSTEEL® pre-painted steel apply a good quality acrylic galvanised iron primer.

- Apply two coats of acrylic roofing paint in the selected colour. (Typically two brush applied coats achieve 50 microns).
- Follow the directions on the container, aiming for a paint thickness of 50 microns

N/A



A P P L I C A T I O N T I P S

Overview

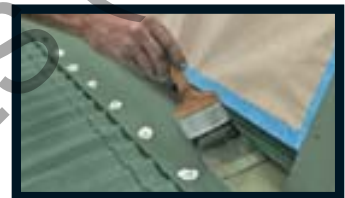
- High quality 100% acrylic paints give approximately a 10 year service life on correctly prepared metal surfaces when applied to specification. This life span will vary slightly with colour, roof orientation and the aesthetic requirements of the situation.
- Take care using spray equipment on hot days. Poor paint curing will downgrade durability.
- Be aware of dry time in winter months and do not paint acrylics on wet or cold days below 10°C.
- Similarly painting of very hot roofs will result in solvent being boiled from the film before full film formation can take place. This would reduce the life of the coating.

Roofing Profiles

- Extensive abrasion damage can be done to COLORSTEEL® painted surfaces with ridge ladders and roofing equipment. Fit all ridge ladders with protective buffers or rubber pads.
- Particular attention should be paid to overlap joins as these may spring up after a painter's weight is removed to reveal an unpainted line.
- Decking profiles often have a tight rollformed bend at the top of the upstand. Care is required to ensure specified film build in this area.
- Ensure the drip edge of all profiles is well cleaned or adhesion may be affected in this area.
- Emphasis should be paid to coating the front edge of tile profiles as dirt collects there and gives rise to mould and algae growth.

- Check for fall out around flues. Special cleaning may be required in these areas.

Brush Application



- Apply acrylic paint at an aim dry film build of 50 microns. Typically 2 brush applied coats are around 50 microns.
- The use of nylon brushes is advisable (but not essential). These should be wet with water prior to use to avoid clogging.
- Apply two full even coats, allowing sufficient drying time between coats.



A P P L I C A T I O N T I P S

Brush Application continued...

- Do not overbrush. Apply following manufacturer's recommendations.
- In warm weather wash brushes out completely at every rest break.
- Thin as necessary as per information on container.

Roller Application

- Follow equipment and paint supplier's recommendations.
- Apply to the spreading rate and film build specified on the container.
- Dampen roller prior to use.
- Apply two full even coats, allowing sufficient drying time between coats.

- Do not over roll. Load up the roller and apply with little pressure.

Spray Application

- Apply to dry film build specification.
- Apply double header coats forming a 'weave' pattern.
- Airless spray can achieve very high film builds. Be aware of spraying before 10.00am and after 3.00pm as the steel will cool rapidly and impair cure, this can result in incorrect film formation and lead to early failure of the coating.

Colour Matching

Most paint suppliers are familiar with the COLORSTEEL® product range and have these

colours available. It should be noted that the gloss and weathering characteristics of COLORSTEEL® products and air dried paints will be different. The effect of this is that over time a difference may become apparent. This is the reason that the use of 'Touch-up' painting of COLORSTEEL® products is not recommended.

Note:

Flaking or peeling paint involving a COLORSTEEL® pre-painted steel product requires professional advice.

For more information, contact New Zealand Steel Ltd, freephone 0800-100 523.



S A F E T Y W H E N W O R K I N G A T H E I G H T S

When working at heights take appropriate precautions to prevent falls. Particular care is required on new roofs.

Wet roof surfaces are slippery and extreme care is required. Ensure that old or corroded roofs are able to take the weight

of people and equipment. Prior to working at heights, refer to current Occupational Safety and Health (OSH) guidelines.

C O L L E C T E D D R I N K I N G W A T E R

Where drinking water is to be collected always check that the selected paint is suitable for this purpose. A number of products carry the recommendation that

downpipes to the tanks be disconnected while the product is being used and often for a period of time afterwards. Please follow these instructions.



FURTHER INFORMATION

For additional information, literature or technical assistance, please contact:

COLORSTEEL® Marketing
New Zealand Steel Limited
Private Bag 92 121, Auckland
Telephone: 0-9-375 8999
Facsimile: 0-9-375 8213
Free Phone: 0800 100 523
Email Address: info@colorsteel.co.nz
<http://www.colorsteel.co.nz>

Zincalume®

ZINCALUME® is a registered trademark of BlueScope Steel Limited.

GALVSTEEL™

GALVSTEEL™ is a trademark of New Zealand Steel Limited.

COLORSTEEL®

COLORSTEEL® is a registered trademark of New Zealand Steel Limited.

THE ROOF OF NEW ZEALAND®
is a registered trademark of New Zealand Steel Limited.

NOTE: With New Zealand Steel Limited's commitment to continuous improvement, information provided in this publication may be subject to modification. At the time of publication we believe the information contained in this document is the best available. Nonetheless, we reserve the right to modify any product, technique, equipment or statement to reflect improvements in the manufacture and application of coil coated products. The information is supplied without prejudice to New Zealand Steel Limited's standard terms and conditions of sale. In the event of any conflict between this information and the standard terms and conditions, the standard terms and conditions shall prevail.

Copyright© 2004 New Zealand Steel Limited.

